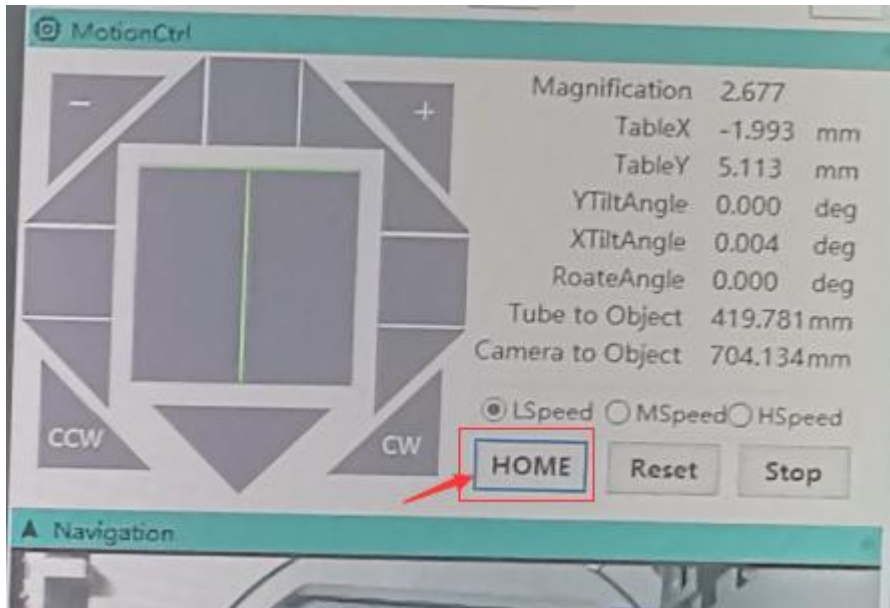
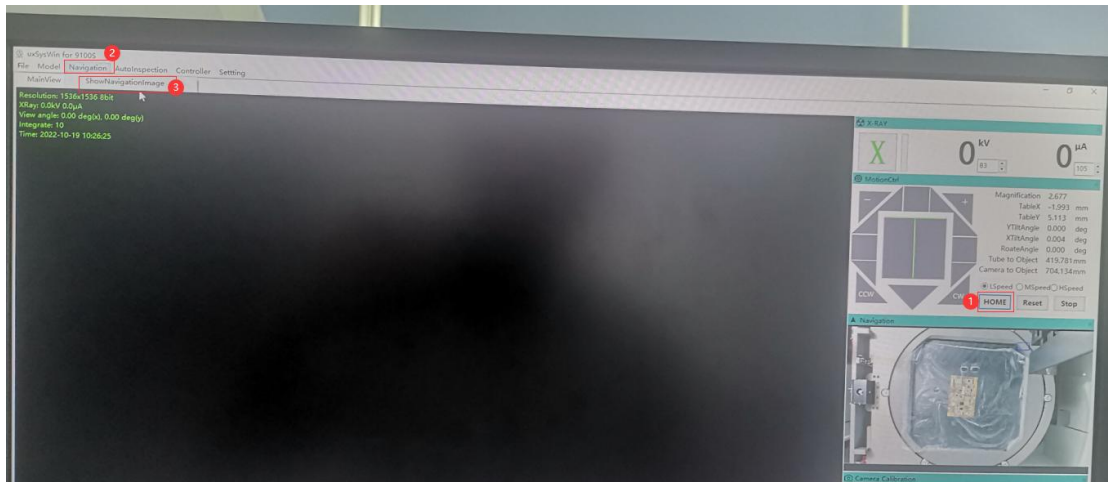


Unicomp X-Ray AX9100 Software Operation Tips

1. Each day before starting X-Ray tests, click the button "Home" to initialize the system.



2. Show Navigation window correctly.

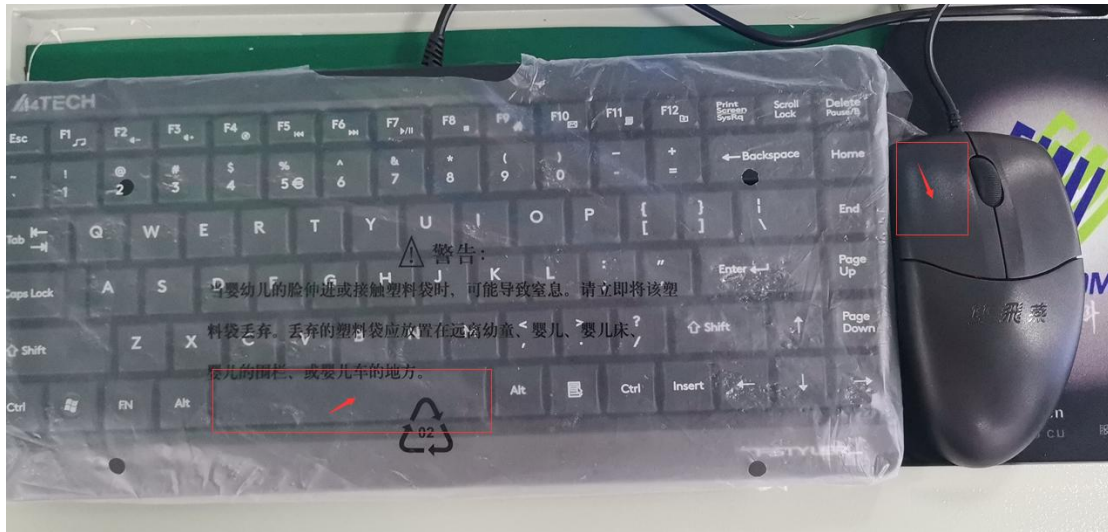


3. Zoom in/out Navigation Window.

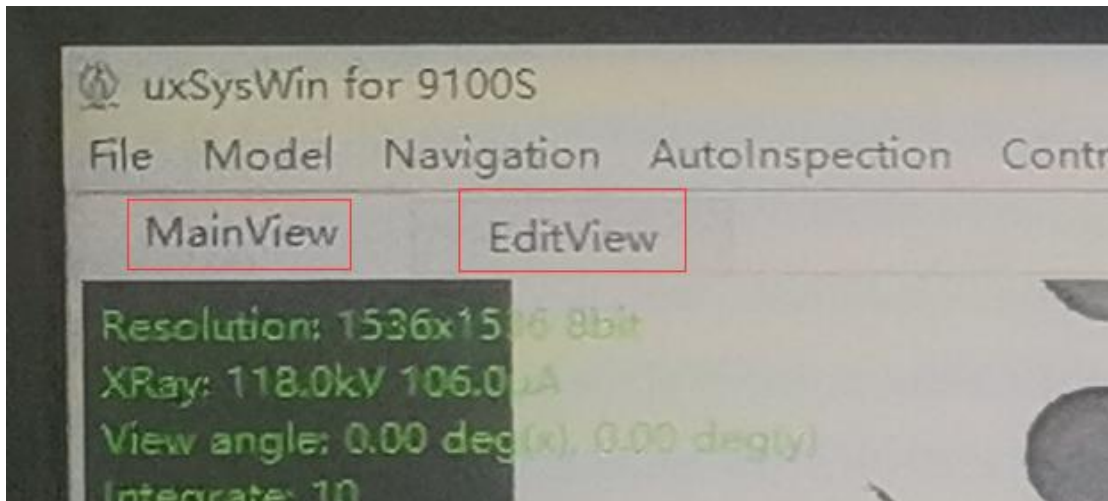
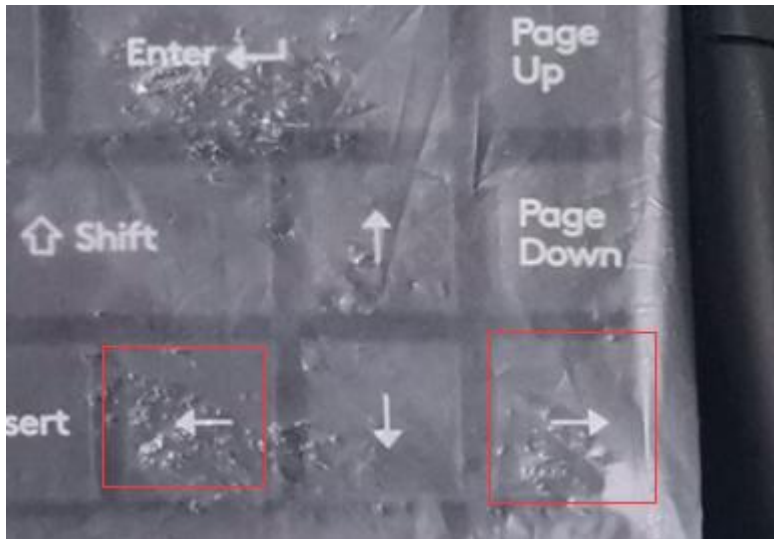
Put the arrow of the mouse on the Navigation window and then scroll the mouse wheel to zoom in or zoom out the Navigation Window.

4. Move the Navigation Window.

Press the "Space" key and the left key of mouse at the same time, and move the mouse, then the Navigation window will be moved.

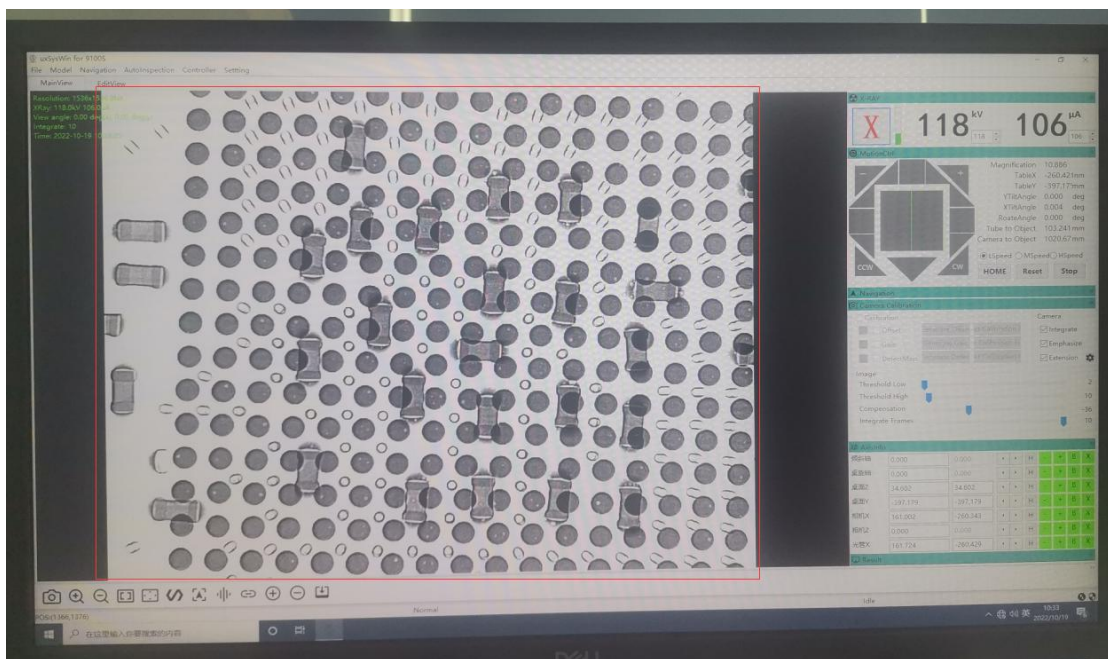


5. Press the Left or Right arrow of the key board to switch the MainView and EditView.



6. Zoom in/out X-Ray image.

Press Ctrl on the keypad and scroll the wheel of the mouse to zoom in/out the X-Ray image.



7. Move the X-Ray image.

Press Ctrl on the keypad and the Left key of the mouse at the same time, and move the mouse.

