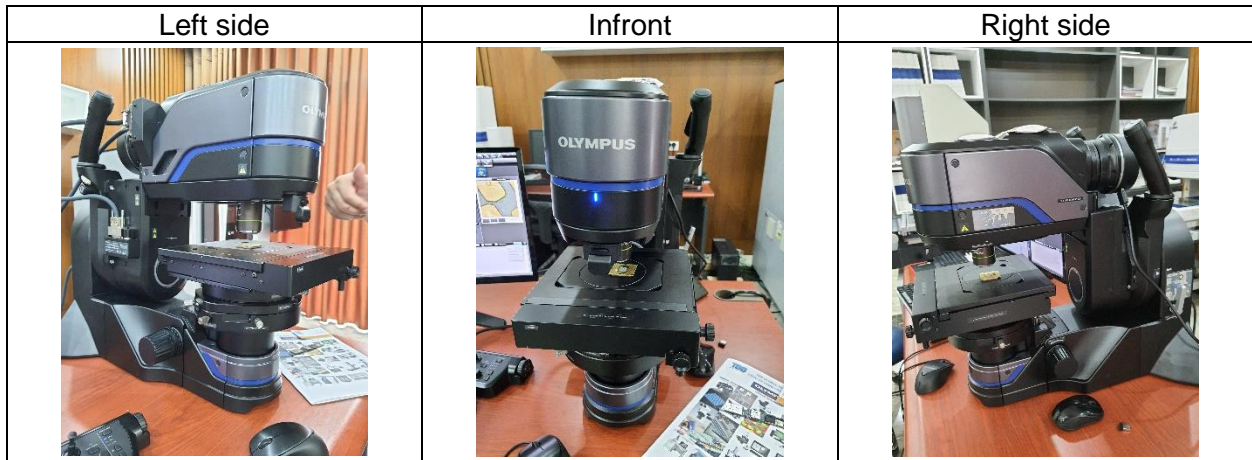


## DSX1000 TRAINING MANUAL



### 1. NORMAL SETUP

#### a. Point of View



#### b. Rotating mode

- Microscope can tilt in angle, totally 90 Degree. Left is 45 degree, Right is 45 degree

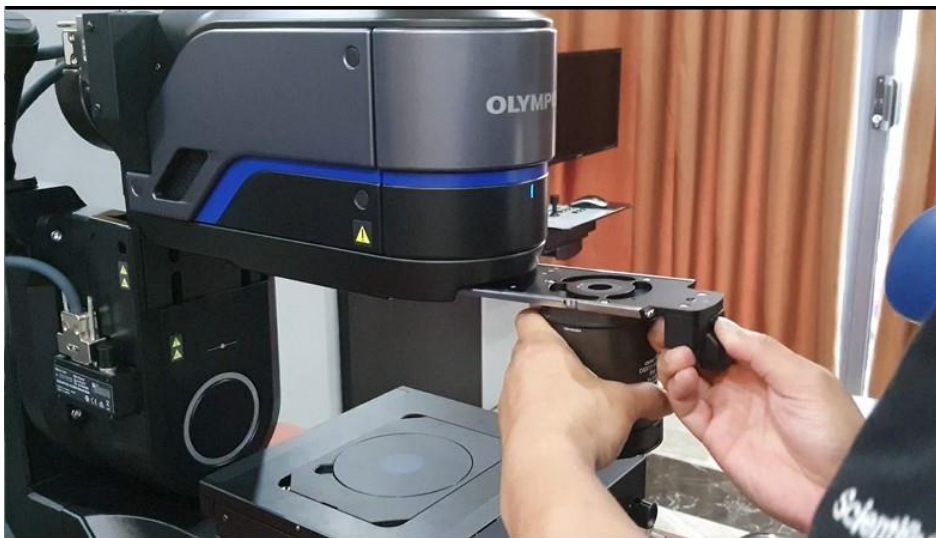


## 2. Prepare Lens Before Use

- Depends on requirements of the sample. Choose the correct Lens. Standard is 1X.



- When choose the right lens, insert Lens into the microscope. Microscope will automatically detect the lens, no need setting on software.

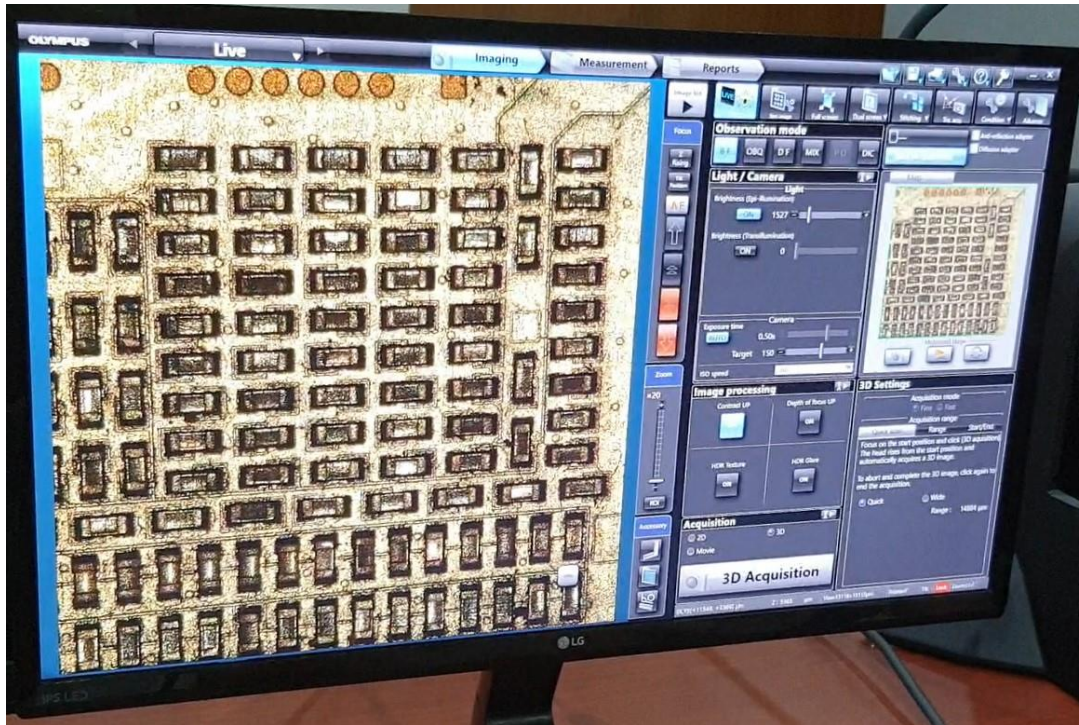


Then, Open the software. Password: Olympus. Also put on the stage one sample



### 3. Software Using

#### a. Main interface of the software

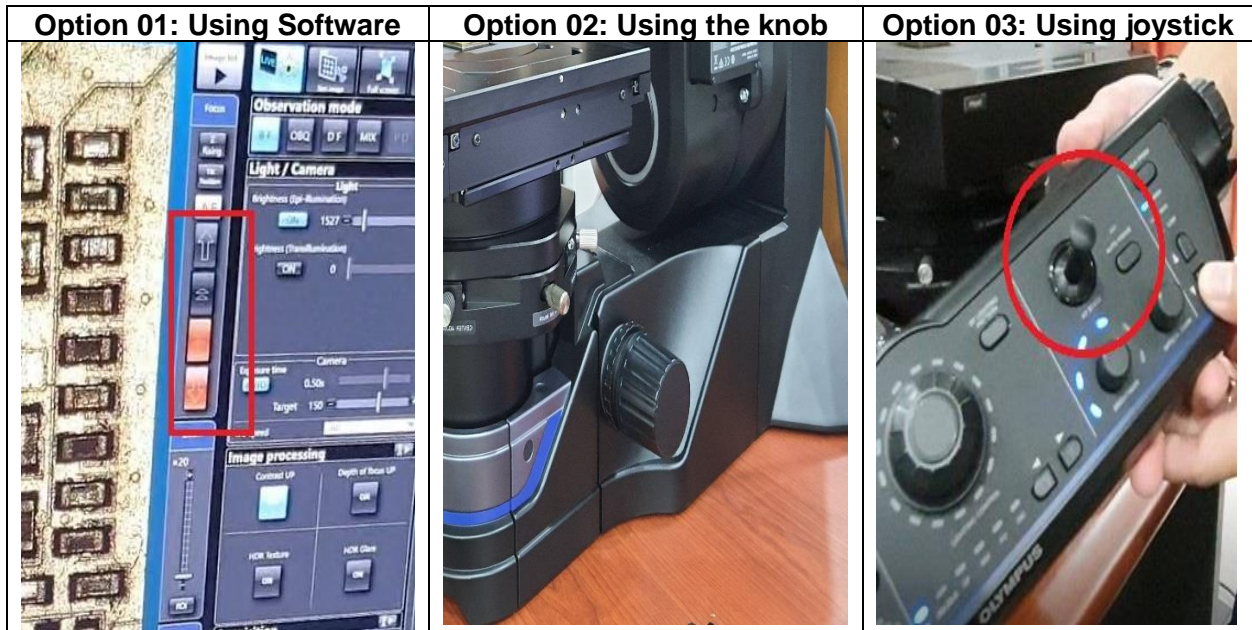


#### b. Make the have the good image.

##### Step 01: Choose the digital magnification



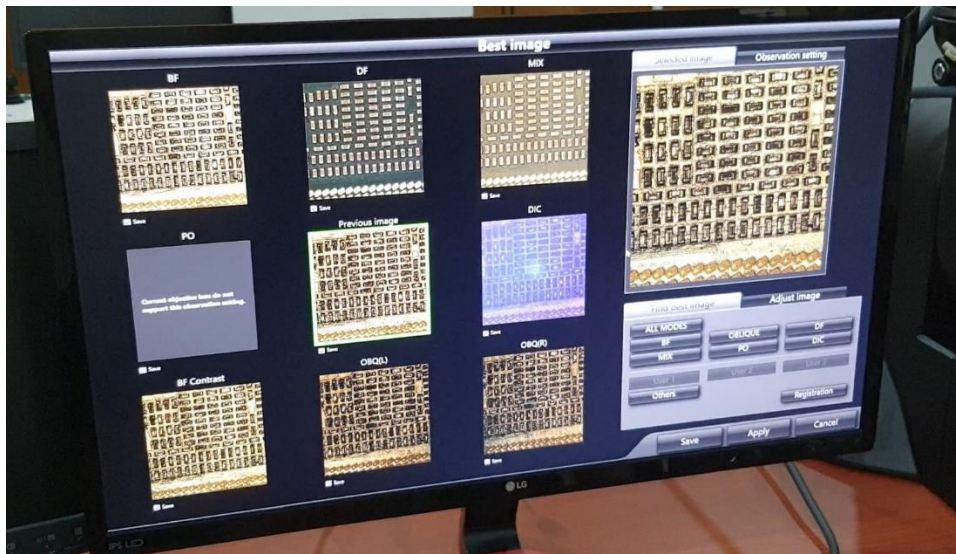
Step 02: Adjust the height of the microscope



Step 03: Click on Function: "Best Image". Then Software show you all mode of image to choose



- All mode of image Appear, then you choose what image that good for you most.

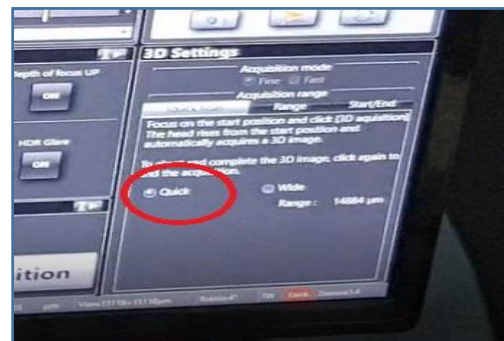


- In this example. We choosing DF mode (Dark Field)



#### 4. Make 3D Image

Step 01: In Acquisition, choose 3D. Then setting Quick



Step 02: Setting range for 3D image



- Start height: Click
- End height: Click
- When finish. Click On 3D Acquisition

Step 03: Save image and Click on Measurement



Step 04: Click on 2D => 3D button. Then 3D image appears

